



Crochet Extra

114th Edition– November 2016

Here on the Sunshine Coast it is shaping up to be quite a warm summer—with long hot days already starting. It has necessitated a few trips to the beach with our puppy who has fallen in love with the waves and water.

In our search for more cotton I came across Dalia from Omega—it comes in 100 gram balls and has a great range of 11 variegated colours. I heard great things about this cotton and so have brought in the entire range of variegated colours. The colour changes are long so create different patterns from the other variegated 4 ply cotton we have.

Two new colours have been added to the Heirloom 8 ply cotton range.

I had several enquiries over the last couple of months about digital row counters—I am happy to say we have sourced them and they are now in stock—they will make great stocking fillers too.

This month our workshops will focus on crocheting with beads, with three projects to make during the month using different yarns and threads—an eyeglass holder (which can also make a lovely necklace), a beaded spiral



which can be turned into a bangle or necklace and a pair of beaded earrings.

Did you know it's only 8 weeks until Christmas? We will be closing for the Christmas break on Thursday

22nd December. However both Fastway couriers and Australia Post get very busy this time of year with parcels and it can sometimes take longer for goods to get where they should. Please allow extra time, and think about ordering items now that you may want to give as gifts or to make for Christmas this year.

Until next time.

Lynda

Crochet Australia,
PO Box 285
Yandina Qld 4561.
(07) 5472 8586.



Sets, Kits & Knick Knacks

This month we focus on sets, kits and knick-knacks – the sets and kits usually mean for you the customer you get a better price and with Christmas just around the corner they make great gifts. And of course who can't be without all the accessories and knick-knacks – those things we need to make our crafting even more enjoyable. These also make great gifts and we've created some sets and kits just for you for this month – see our specials.

Our most popular sets are still the cotton handkerchief packs, available in white and 5 colours, with or without motifs, with straight or scalloped edges, or monogrammed with an initial. Or you can try our combo packs with matching thread. The washer sets are also popular – in ladies or kids novelty designs. Unfortunately we haven't sourced any good



quality towels at a reasonable price, but have some new leads we are following.



There are also hook sets – Clover Amour and Soft Touch, Kless & Gessman, Susan Bates, Boye and Denise – needle sets – Boye and Liteflex – as well as tricot and crohook sets.

We have some 'learn to kits' – for those learning a new skill – crochet, knitting, double-ended crochet, tunisian or tatting – and kits for making specific patterns (such as the granny square bag, amigurumi or shawls) which make great gifts themselves, or can be made to give the finished item as a gift.

See them all in the 'Look What We Found Section'. As Christmas is just around the corner, our free pattern is to [crochet /knit /tat](http://crochet/knit/tat) a snowflake ornament.



Email: info@crochetaustralia.com.au

Website: www.crochetaustralia.com.au

Facebook: www.facebook.com/crochetaustralia

ABN: 31 595 069 229



Tip of the Month

Care Symbols



Have you ever wondered what all those care symbols on tags and yarn labels represent or which symbols should you add to items that you make? While some labels add explanations, others do not. I found this handy list from Knitting Fever which I thought would be useful, particularly as we are all making gifts for Christmas.

TEXTILE CARE SYMBOLS

Wash

basic symbol

Cold Wash	Warm Wash	Hot Wash	Hot Wash	Hot Wash	Hot Wash

Gentle Wash	Gentle, Cold Wash	Gentle, Warm Wash	Perma Press	Do Not Wash	Hand Wash	Cold Hand Wash	Warm Hand Wash

Bleach

basic symbol

No Bleach	Non-Chlorine Bleach

Dry

Do Not Dry	Drip Dry	Dry Flat	Dry In Shade	Line Dry	Do Not Wring

Tumble Dry

basic symbol

Do Not Tumble Dry	Perma Press	Gentle	No Heat	Low Heat	Medium Heat	High Heat

Iron

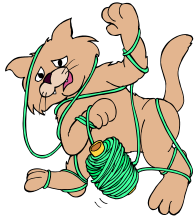
basic symbol

Do Not Iron	Do Not Steam	Low	Medium	High

Dry Clean

basic symbol

Do Not Dry Clean	Any Solvent	Any Solvent Except Trichloroethylene	Petroleum Solvent	Short Cycle	Reduced Moisture	No Steam	Low heat



Look What We Found



HOOKSETDENISE \$98.50



Clover Soft Touch Hook Sets

HOOKSETCVARST8—\$72.00 Set of 8 hooks .6mm to 1.75mm

HOOKSETCVARAL10—\$101.00. Set of 10 hooks 2mm to 6mm



HOOKSETCL \$94.50



Clover Amour Hook Sets

HOOKSETCVAMOUR9— \$99.90 Set of 9 hooks 2mm—6mm

HOOKSETCVAMOUR10—\$125.95 Set of 10 hooks 2.25mm—6mm

HOOKSETCVAMOUR7—\$87.95 Set of 7 hooks .6mm—1.75mm



HOOKSETBIRCH24 \$32.00



Liteflex Knitting Needle sets

AC25KNITLITESET— \$28.20 7 pr 25cm Needles

ACCKNITLITESET—\$64.00 14pr 30cm Needles



ACCKNITMASTER \$135.00



HANKBKRDOZ \$16.60



EDGECOMBO \$34.50



Hanky combos—select straight or scalloped edge or mongrammed with cotton

HANKLIZ20COMBO \$53.25

HANKLIZ40COMBO \$55.50

HANKLIZ80COMBO \$45.25

HANKALPHACOMBO \$12.60



KITBAT \$40.00



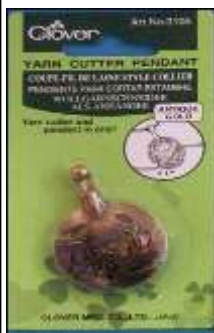
KITALBORDASHAWL \$48.00



DMC14895Kit \$32.00
Decorative Table Set



COATHANGERCOMBO \$16.50



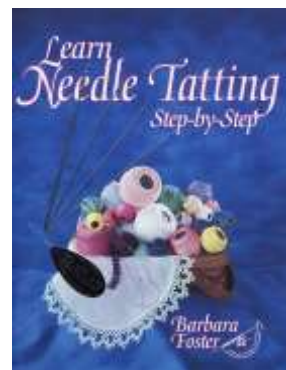
Pendant Cutters

ACCpendcutyrn \$14.50—Yarn Cutter,
Ant Gold or Silver

ACCpendcut \$13.50—
Thread Cutter, Ant Gold
or Silver



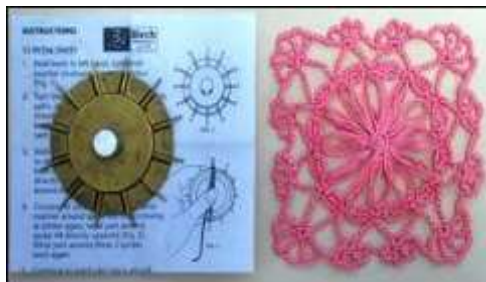
ACCNDLTHREADLED \$12.50



NMST11P \$44.50
Needle Tatting Kit



ACCKNITWONDER \$13.95



ACCDaisyWHL \$17.25



HOOKSETBEGIN \$29.50



HOOKSETKNOOK \$19.50



KNOOKSETKIDS \$17.50



ACCPOCKETKNIT \$21.50



14934Kit \$33.50
Owl Amigurumi Kit



CROHOOKCOMBO \$29.50

TOWELWAMWASH12 \$17.40





HANKERCHIEF Sets—Hemstitched white or coloured, plain or with embroidered motifs.

HANKMIXCOLSEGE—6 colours hankies with straight edge and motif **\$24.50 or \$4.55 each**

HANKMIXCOLSCAL—6 colours hankies with scalloped edge and motif **\$24.80 or \$4.60 each**

HANKMIXSEGE—6 white hankies with straight edge and motif **\$23.75 or \$4.40 each**

HANKMIXSCAL—6 white hankies with scalloped edge and motif **\$23.75 or \$4.40 each**

HANKPLAINSCAL6—6 white hankies with scalloped edge and no motif **\$22.00 or \$4.10 each**

HANKPLAINSEGE6—6 white hankies with straight edge and no motif **\$22.40 or \$4.15 each**

HANKCOLSCAL4—4 cream hankies with scalloped edge and motif **\$16.55**

HANKPLAINCOLSE4—4 coloured hankies with straight edge and no motif (slight imperfections) **\$12.00**



Crochet Monthly Sets \$45.00 ** Heavy

MAGCROMHLYSET C—294-299 (2004 Series)

MAGCROMHLYSET E—280, 282-286 (2003 series)

MAGCROMHLYSET F—287-291, 293 (2003/4 Series)



Decorative Crochet Sets \$50.00 ** Heavy

MAGDECORSET2002

MAGDECORSET2003

MAGDECORSET2004



Magic Crochet Sets \$55.50 ** Heavy

MAGMAGICSET2002

MAGMAGICSET2003

MAGMAGICSET2004



KITGSB \$20.00



KITMUGHUG \$16.50



KNITSETBEGIN \$27.50

Visiting hours:

Mon, Tues, Thurs: 9am—3.00pm

Fri: by appointment

Sat: 1st Saturday of each month 9am—12pm

Wed: Group visits (6 or more) by appointment

Workshops: Tuesdays 9.30am—11.30am bookings recommended

Order three ways (See front page for contact details):

Secure shopping cart, phone or mail.

We ship Monday, Tuesday, Thursday and Friday. We endeavour to ship all orders received before 12pm on these days, and orders received after this are shipped on the next day we ship.